

SHELTER
ASSEMBLY MANUAL
Model # 203012
W20'x L30 x H12'



SPECIFICATION

Length: 9.15m Width: 6.1m Height: 3.66m

IMPORTANT-----READ MANUAL FIRST

Improper site preparation, Assembly and Maintenance may invalidate warranty and cause unnecessary and costly mistakes. If you have any questions contact your local dealer.

For User Friendly assembly we have identified each individual component with the part code as indicated in the parts list. Please refer to the part code numbers and drawing to ensure problem free assembly.

It's necessary to tighten the roof fabric enough to avoid "hammocks" on the roof and also re-tighten once or twice again after a few months of use. This is important when assembly in cold weather (autumn and winter) because the fabric is stiff then and when we get the sun and warm weather afterwards it will make the fabric "slack" again and need to be re-tighten before next winter.

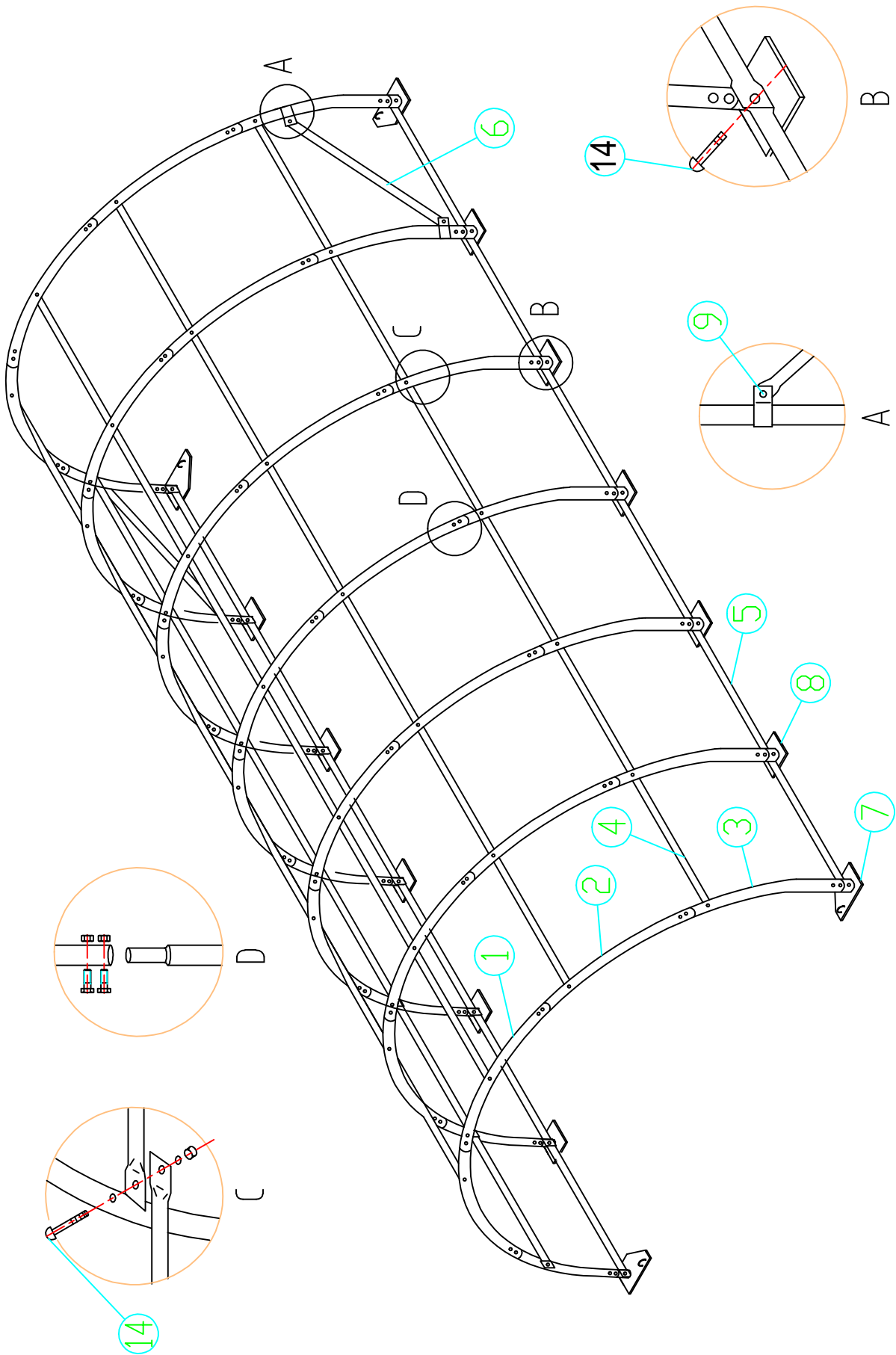
It's **the owners responsibility** to take of snow immediately if not slide off by itself.

READ ALL INSTRUCTIONS BEFORE ASSEMBLY

1. Keep work area clean. Cluttered areas invite injuries. Do not set up near snow drifts, in slippery places, in high winds, or wet location.
2. Keep children away. All children should be kept away from the work area.
3. Don't over reach. Keep proper footing and balance at all times.
4. Do not assemble if under the influence of alcohol or drugs. Read warning labels on prescriptions to determine if your judgment or reflexes are impaired while taking drugs. If there is any doubt. Do not assemble.
5. Be aware of possible windy conditions; fasten the bases in concrete if these conditions are likely to occur. Remove the cover during hurricane.
6. Be careful with power and heat sources. Do not keep heat sources near the tarpaulin. Do not expose to open flame.
7. Be aware of personal safety during assembly and use. Be careful not to pinch fingers with clips and tubes when assembling; when using makes sure there is adequate ventilation for exhaust and other dangerous fumes.

Parts List

Part Code	Description	Quantity(PC)	
1	Roof Bent Joist	7	
2	Middle Bent Joist	14	
3	Lower Bent Joist	14	
4	Roof & Sidewall Purlin	30	
5	Lower Tensioning Tube	12	
6	Support Tube	2	
7	Base Plate for at four corners	4	
8	Base Plate for inner sidewall	10	
9	Clip for No.6	4	
10	Stake Peg	42	
11	Roof Cover	1	
12	Front & Back cover	1 each	
13	Bolts M8x60 for joist	84	
14	Bolts M8x70 for purlin connection	49	
16	Knitting Rope for Roof Cover	1 bundle	
17	Nylon Tie for Front and Back cover	60	



EQUIPMENT AND MATERIAL FOR INSTALLATION

- | | |
|-------------------|-------------------------|
| 1. Measuring Tape | 2. String for Alignment |
| 3. Stakes | 4. Step Ladder |
| 5. Sledge Hammer | 6. Drill |
| 7. Wrench | |

INSTALLATION PROCESS

A—BASE PLATES INSTALLATION

Please refer to the diagram (Figure 2) to place the base plates

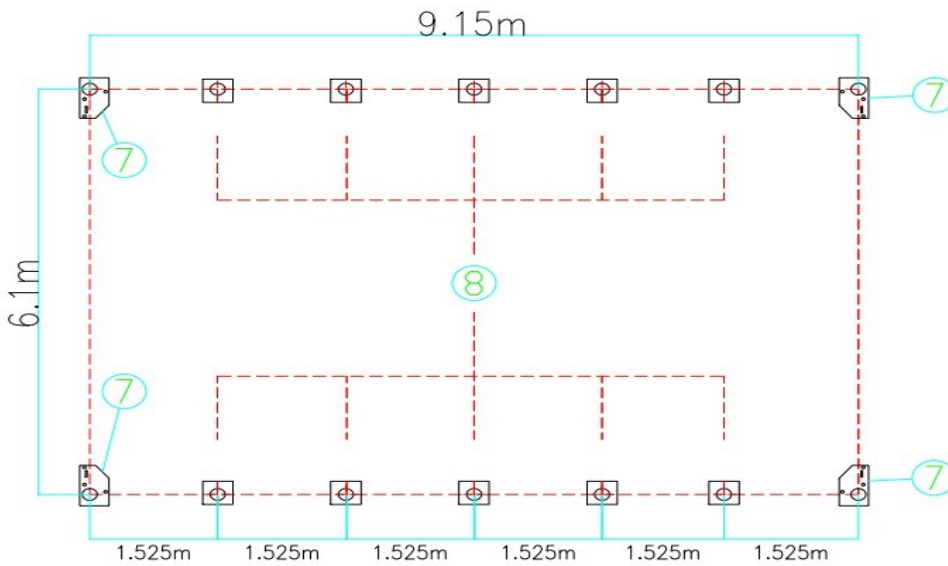


Figure 2

1. The measurement is from center to center of the tubes. Referring to the above diagram and confirm the place of base plates. ENSURE THAT THE FOUNDATION IS SQUARE.
2. There are three holes on the plates, Refer to Figure 3 to place the stake pegs into the ground, THUS ALL BASE PLATES ARE SECURED.

Foundation placement

As Figure 3 shows each Base Plate is equipped with 3 pieces of Stake Peg (No.10)

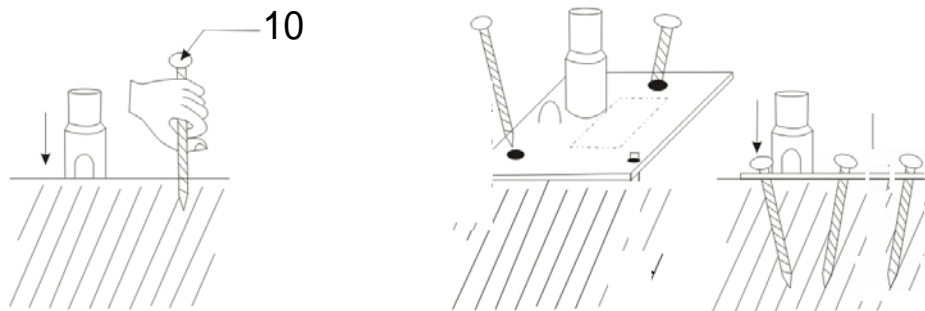


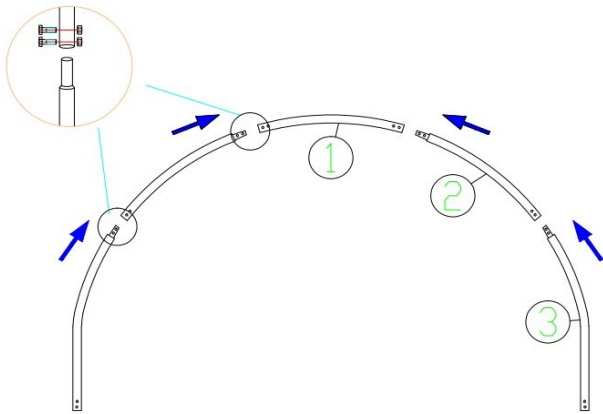
Figure 3

Method of Placing Earth Auger

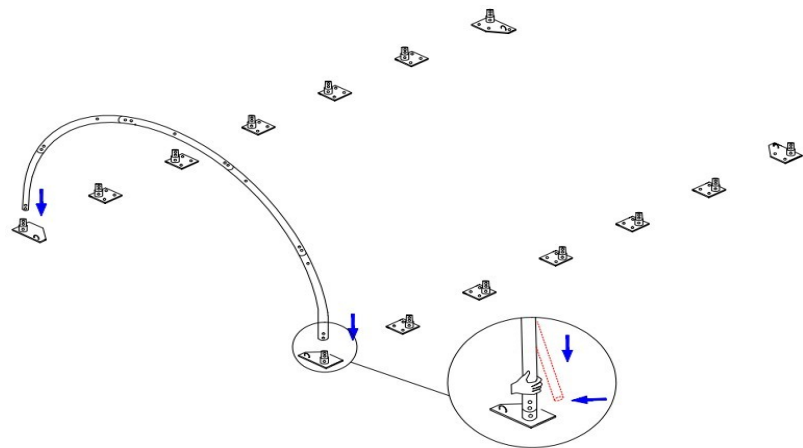
1. Mark the stake peg hole through the base plate by using the stake peg. Move the base plates away and the mark determines where the stake peg will be.

Note: The Stake Pegs apply for normal conditions, not suitable to the rock ground, frozen soil and concrete ground.

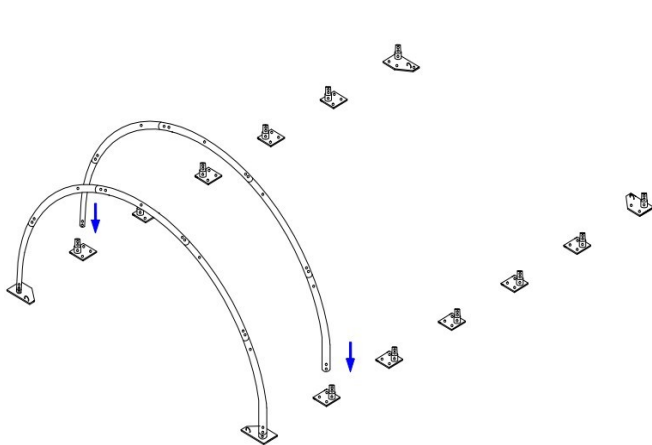
B—FRAME INSTALLATION



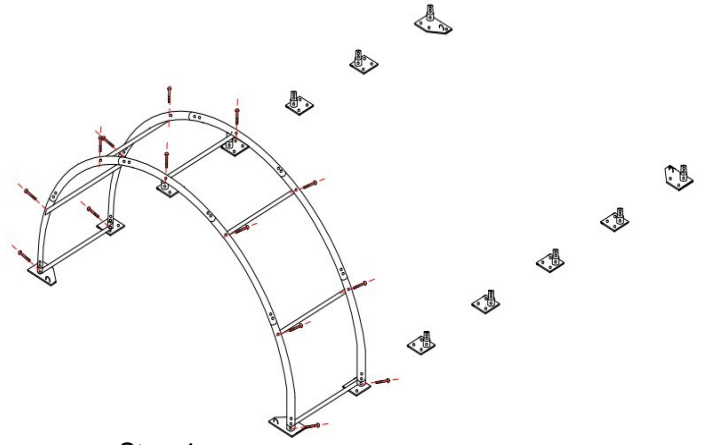
Step 1



Step 2



Step 3

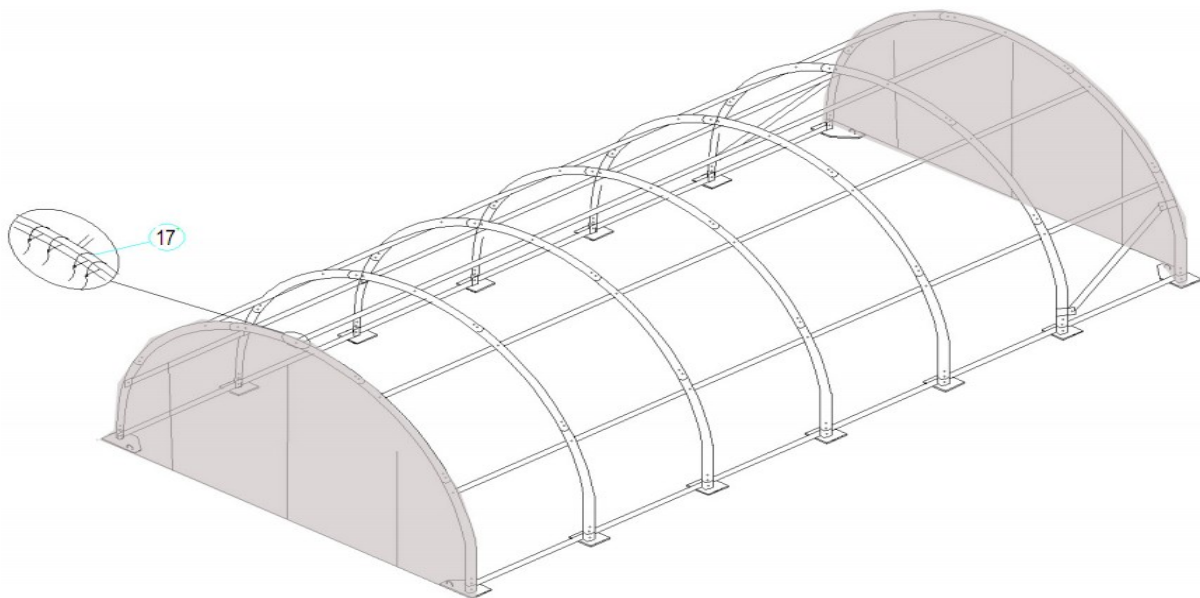


Step 4

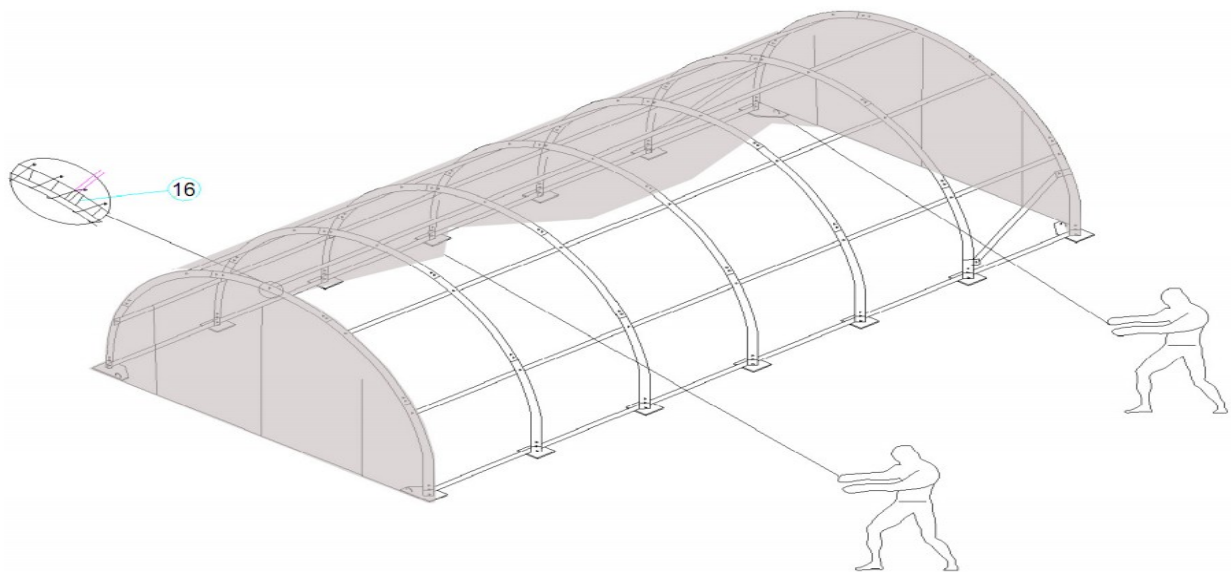
IMPORTANT: THE ARCHES WILL BE WIDER THAN THE BASE PLATES

1. Install the Clip to the arches as above diagram.
2. When finish installing the first two arches into the base pates, use Roof&Sidewall Purlin (No.4) to connect them by Screw M8x70(No.14). Then install the third arch into the plate and connect the Roof & Sidewall Purlin. In this turn, one arch and then purlin tubes. Then come to install the front panel and back panel. Find the relative components and assemble them.
3. Connect the Support Tube(No.6) between the sidewall tubes, and adjust the length.

C-INSTALLING THE FRONT AND BACK COVER



D-INSTALLING THE ROOF COVER



NOTE: DO NOT install the cover onto the frame of your building in high wind conditions. A slight breeze is the most advantageous for cover installation. To take advantage of the breeze, pull the cover up over the arches with the breeze blowing in the cover like a sail filled with air.

1. Roll out the roof cover on a ground sheet. Align the cover evenly to each end of the frame.
Note: Be sure doing not over pull the end of the roof cover.



2. Pull the cover over the frame **EVENLY, CAREFULLY AND SLOWLY**.
Tighten the cover with Nylon Tie (Part No.17) for front cover and back cover.
and tight the Roof cover with Knitting Rope (Part No.16)